

FI Rigid 4x2 SPECIFICATIONS

Model	FIV1PFX2L		FIV1PHX2L
Crew	3 (1+2)		
DIMENSIONS mm			
Wheelbase	(A)	3,760	4,250
Overall length	(B)	6,955	7,465
Overall width	(C)	2,210	2,210
Overall height, approx.	(D)	2,480	2,480
Tread	front	1,790	1,790
	rear	1,695	1,695
WEIGHTS kg			
Kerb weight *		3,840	3,860
Max. GVW		11,990	11,990
CALCULATED PERFORMANCE			
Max.speed	km/h	100	
Max.gradeability	(tan θ)%	36.8	
ENGINE			
Model	4D37, 3.907-liter, 4-valve per Cyl.		
Type	4-stroke cycle, water cooled direct injection, turbocharged diesel engine		
Max.output	125kW/2,500rpm		
Max.torque	520Nm/1,500rpm		
Alternator	24V/45A		
DRIVE LINE			
Clutch	Single dry plate, diaphragm spring, hydraulic control with air assisted booster		
Transmission	6-speed manual transmission		
gear ratios	6.696-3.806-2.289-1.480-1.000-0.728-Rev: 6.294		
Final reduction gear	Full floating type single reduction, hypoid		
ratio	6.33		
CHASSIS			
Axle capacity kg	front	4,500	3,990
	rear	7,490	8,000
Tire	front	Single, 8.25R20 / Option: 255/70R22.5	
	rear	Dual, 8.25R20 / Option: 255/70R22.5	
Suspension	Semi-elliptic, laminated leaf springs		
Brake	service	Full air, S-cam, dual circuit	
	parking	Spring actuated, pneumatically operated with hand brake valve	
	exhaust	Standard	
Fuel tank capacity	160L / Option: 200L		
Electrical system – batteries	2x12V, 75Ah		

* Complete Cab chassis vehicle (without driver & rear body) with: ●Coolant ●Fuel tank filled with fuel of 90% of its capacity ●Spare wheel ●Standard tool kit ●Chocks
●All liquids to ensure correct functioning of vehicle ●Warning triangle (if provided) ●Jack & jack rod

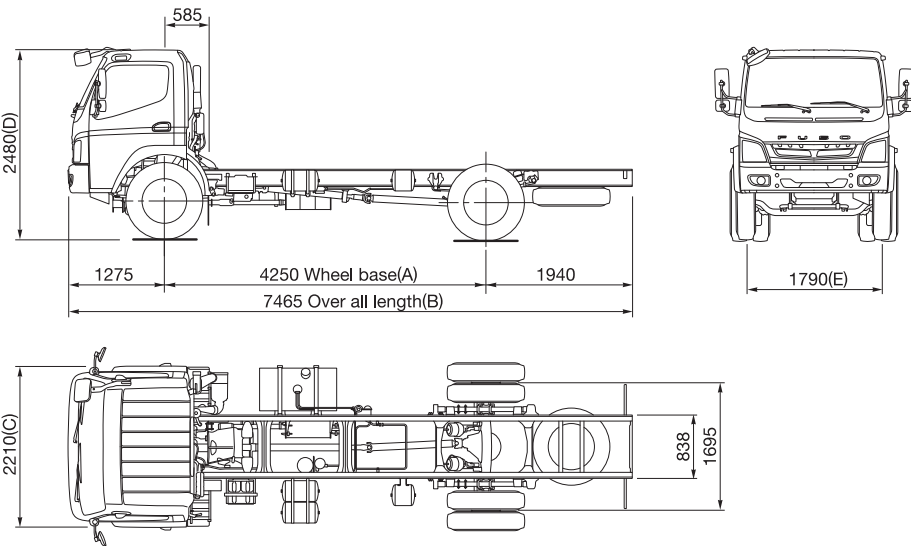
COLOR VARIATION

Standard	Arctic White
Option	Yellow
	Coral Orange

OPTIONS

- Transmission Power Take-Off (PTO)
- Tubeless tires
- Air Conditioning
- Rear body-High Side Deck (17ft & 19ft)
- Rear body-Fixed Side Deck (17ft & 19ft)

DRAWINGS (FIV1PHX2L) (mm)

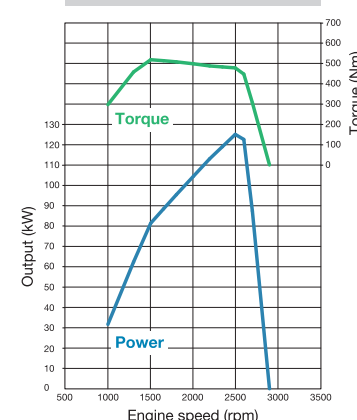


Sure-footed and Equipped to Maximize Your Profit



4D37

DIESEL 3.907L
125kW/2,500rpm
520Nm/1,500rpm



Fuel-efficient Common Rail Engine

The fuel-efficient, common rail, direct injection engine with four valves per cylinder is designed to deliver ample power and torque while lowering operating costs.



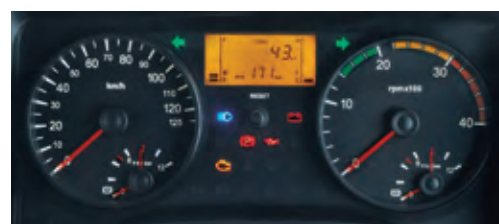
Smooth, Durable Six-speed Transmission

The six-speed (6F, 1R) overdrive transmission combines multiple synchronizer rings and a cable type shift mechanism to make shifting smoother and easier. The large diameter clutch plate and organic clutch material increase durability.



Aerodynamic Cab Design

Aerodynamic design reduces wind resistance and lowers fuel cost. It also reduces noise and keeps the cabin quieter.



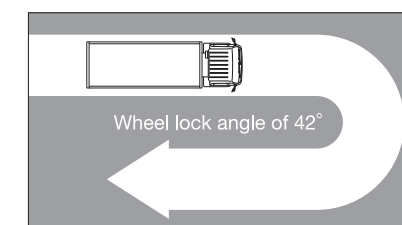
Intelligent Instrument Cluster

The LED panel makes vital information more visible, and a buzzer will sound if the engine overheats. The Trip Mileage Indicator makes it easy to monitor distance traveled, average speed and fuel consumed.



A Great Place to Work

Fully adjustable seats. A tilt-and-telescoping steering wheel and smooth-shifting transmission. Power windows. Lined roof, side trim, and handy console pocket for storage of small objects. All in a comfortable cabin that reduces driver fatigue and increases productivity.



In All of the Twists and Turns

The short turning radius makes it easier to drive on narrow or winding streets.



Handling Heavy Loads with Ease

Rear suspensions with more and thicker leaves enhance both load capacity and durability. The banjo-type rear axle has been strengthened with a larger crown wheel and larger diameter shaft.

A More Reliable Frame for Maximum Profitability

In this chassis, thicker, full-depth long members add extra toughness to the frame. Shot-peening and powder-coating increase surface strength and resistance to corrosion.