

FA Rigid 4x2 SPECIFICATIONS

Model		FAV1PF1L	FAV1PH1L	FAV1PK1L
Crew		3 (1+2)		
DIMENSIONS mm				
Wheelbase	(A)	3,760	4,250	4,800
Overall length	(B)	6,865	7,465	8,075
Overall width	(C)	2,200	2,200	2,200
Overall height, approx.	(D)	2,405	2,405	2,405
Tread	front	1,790	1,790	1,790
	rear	1,690	1,690	1,690

WEIGHTS kg				
Kerb weight *		3,255	3,280	3,310
Max. GVW		9,600	9,600	9,600

CALCULATED PERFORMANCE				
Max.speed	km/h	100		
Max.gradeability	(tan θ)%	27.8		

ENGINE				
Model		4D37, 3.907-liter, 4-valve per Cyl.		
Type		4-stroke cycle, water cooled direct injection, turbocharged diesel engine		
Max.output		100kW/2,500rpm		
Max.torque		420Nm/1,500rpm		
Alternator		24V/45A		

DRIVE LINE				
Clutch		Hydraulic control, diaphragm spring, single dry plate with concentric slave cylinder (CSC)		
Transmission		6-speed manual transmission		
	gear ratios	5.400-3.657-2.368-1.465-1.000-0.711-Rev: 5.400		
Final reduction gear		Full floating type single reduction, hypoid		
	ratio	5.13		

CHASSIS				
Axle capacity kg	front	3,080	3,325	3,510
	rear	6,520	6,275	6,090
Tire	front	Single, 8.25R16 / Option: 235/75R17.5		
	rear	Dual, 8.25R16 / Option: 235/75R17.5		
Suspension		Semi-elliptic, laminated leaf springs		
Brake	service	Full air, S-cam, dual circuit		
	parking	Spring actuated, pneumatically operated with hand brake valve		
	exhaust	Standard		
Fuel tank capacity		160L / Option: 200L		
Electrical system – batteries		2x12V, 75Ah		

* Complete Cab chassis vehicle (without driver & rear body) with: ●Coolant ●Fuel tank filled with fuel of 90% of its capacity ●Spare wheel ●Standard tool kit ●Chocks
●All liquids to ensure correct functioning of vehicle ●Warning triangle (if provided) ●Jack & jack rod

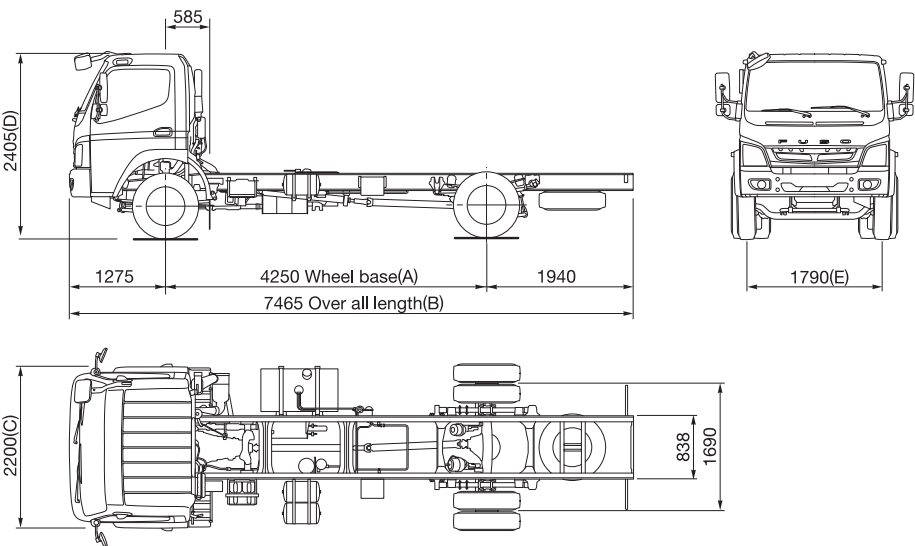
COLOR VARIATION

Standard	<div></div>	Arctic White
<hr/>		
Option	<div></div>	Yellow
	<div></div>	Coral Orange

OPTIONS

- Transmission Power Take-Off (PTO)
- Tubeless tires
- Air Conditioning
- Rear body-High Side Deck (17ft & 19ft)
- Rear body-Fixed Side Deck (17ft, 19ft & 21ft)

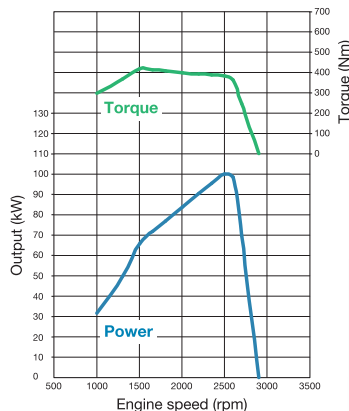
DRAWINGS (FAV1PH1L) (mm)



Light-footed and Powered for Profit



4D37
DIESEL 3.907L
100kW/2,500rpm
420Nm/1,500rpm



Fuel-efficient Common Rail Engine

The fuel-efficient, common rail, direct injection engine with four valves per cylinder is designed to deliver ample power and torque while lowering operating costs.



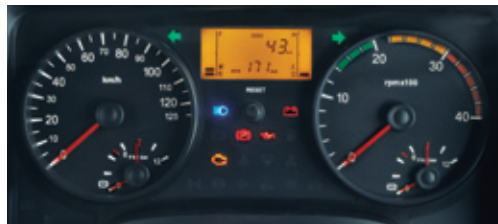
Smooth, Durable Six-speed Transmission

The six-speed (6F, 1R) overdrive transmission combines multiple synchronizer rings and a cable type shift mechanism to make shifting smoother and easier. The large diameter clutch plate and organic clutch material increase durability.



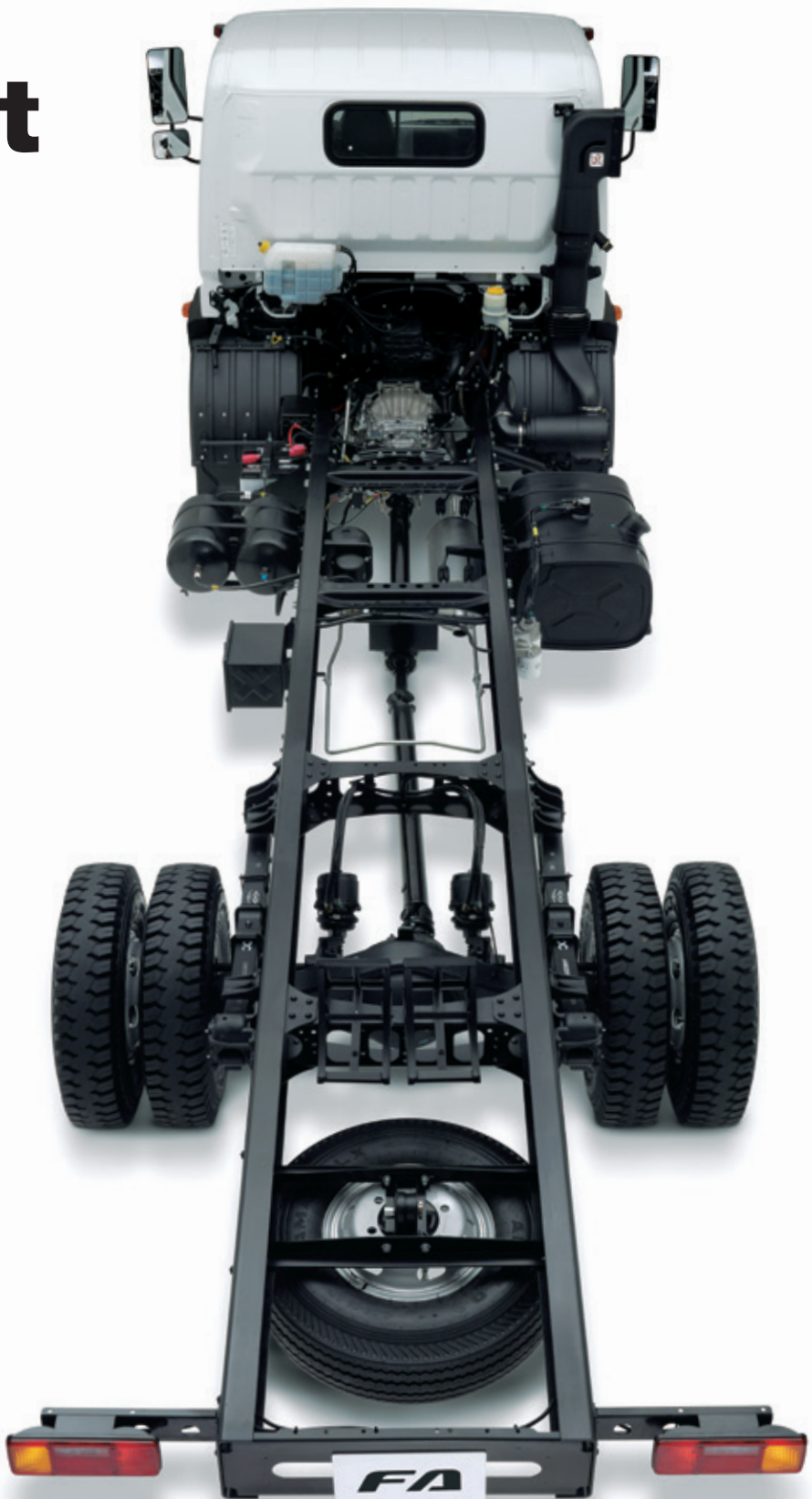
Aerodynamic Cab Design

Aerodynamic design reduces wind resistance and lowers fuel cost. It also reduces noise and keeps the cabin quieter.



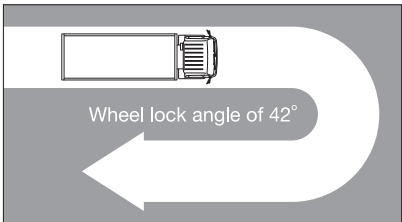
Intelligent Instrument Cluster

The LED panel makes vital information more visible, and a buzzer will sound if the engine overheats. The Trip Mileage Indicator makes it easy to monitor distance traveled, average speed and fuel consumed.



A Great Place to Work

Fully adjustable seats. A tilt-and-telescoping steering wheel and smooth-shifting transmission. Power windows. Lined roof, side trim, and handy console pocket for storage of small objects. All in a comfortable cabin that reduces driver fatigue and increases productivity.



In All of the Twists and Turns

The short turning radius makes it easier to drive on narrow or winding streets.



Handling Heavy Loads with Ease

Rear suspensions with more and thicker leaves enhance both load capacity and durability. The banjo-type rear axle has been strengthened with a larger crown wheel and larger diameter shaft.

A More Reliable Frame for Maximum Profitability

In this chassis, thicker, full-depth long members add extra toughness to the frame. Shot-peening and powder-coating increase surface strength and resistance to corrosion.